



THE DAX CENTRE

VENUE HIRE



Located in the Kenneth Myer Building on the grounds of the University of Melbourne in Parkville, The Dax Centre is an elegant, contemporary venue suitable for a range of events.

The gallery space features exhibitions by artists with a lived experience of mental health issues. It can accommodate 200-300 guests, standing room. It is also suitable for seated events such as business meetings and conferences.



THEDAXCENTRE

AVAILABILITY

**The gallery is available for venue hire 5 days a week
Monday - Friday, 9am - 5pm.**

Weekends and extended hours may be available upon request.

Please note that availability is dependent on The Dax Centre's education programs, exhibition and event scheduling.



VENUE HIRE RATES

Venue	Half Day Rate Weekdays 9am-5pm 4 hours or less	Full Day Rate Weekdays 9am-5pm	Evening Rate Weekdays Mon-Thu 5pm-9pm	Half Day Rate Weekends Fri-Sun 4 hours or less	Full Day Rate Weekends Sat-Sun
Gallery & Auditorium	\$950	\$1300	\$1050	\$1150	\$1600
Boardroom	\$400	\$700	\$750	\$750	\$850

(The above rates are GST exclusive)

Hire rates include a minimum of one staff member to be available during the hire period to assist with any set up required and manage any questions on the day.

Please note public holiday rates are available upon request.

Auditorium space for up to 250 people available in conjunction with a Gallery booking, pricing and availability upon request.





VENUE HIRE INCLUSIONS

Gallery

- Lighting
- Limited tables and chairs are available and can be configured as requested, please contact us to discuss your needs
- Staff member available on site during your event
- Wireless microphone and speakers

Boardroom:

- Natural light
- Data projector and screen
- 2 x whiteboards
- Boardroom table and up to twelve chairs
(Can be set up theatre style, suitable for small seminars)

Additional Costs:

- A bond of \$300 may be requested upon booking
- After hours IT support can be provided at an additional cost
- A cleaning fee may be charged depending on the planned use of the gallery, for example for an evening function where alcohol and food are served a cleaning fee may be added to the hire rates

CATERING

We can recommend several local caterers should you require, please contact us to discuss.

For venue hire, the gallery does not provide glassware and this will need to be sourced via external catering.

TRANSPORT

The Dax Centre is just 10 minutes from Melbourne CBD and is accessible by tram, car, bike or walking.

Tram

- Tram number 19 stops outside the Kenneth Myer Building on Royal Parade

Car

- Limited paid parking is available below the Kenneth Myer Building. Hours are Monday to Sunday 6am to 10pm.
- Fees and charges are Monday to Friday \$12.50 for 4 hours or \$25.00 for all day and a flat rate of \$8.00 after 5pm on Monday to Friday and Saturday and Sundays.

Bike

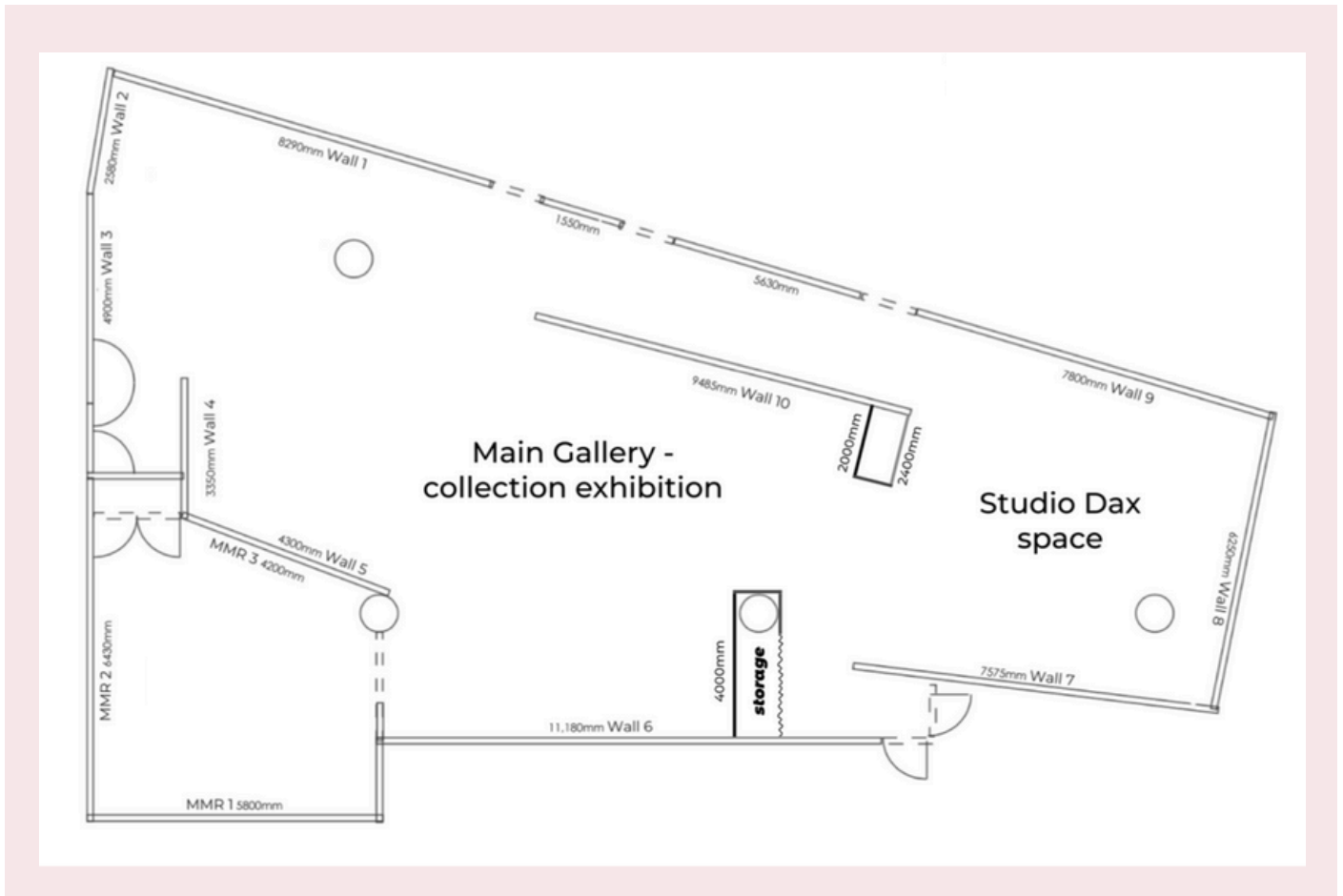
- There are ample bike racks just outside the side entrance to The Dax Centre on Genetics Lane (this runs alongside the Kenneth Myer Building)

Walking

- The Dax Centre is a 15-20 minute walk from Melbourne CBD



GALLERY FLOOR PLAN



GALLERY TOURS

We can provide a guided tour of our current exhibitions as part of your event. Learn about the 'She Who Persists' annual exhibition, artworks and artists' stories, the history of The Dax Centre and the heritage listed Cunningham Dax Collection. Our 45 minute guided tours are charged at \$150 as part of an event and custom tours are available. Please speak to us about your needs.

ACCESSIBILITY

The Kenneth Myer Building and The Dax Centre Gallery are accessible by wheelchair. Please contact us for any specific accessibility questions or requirements.